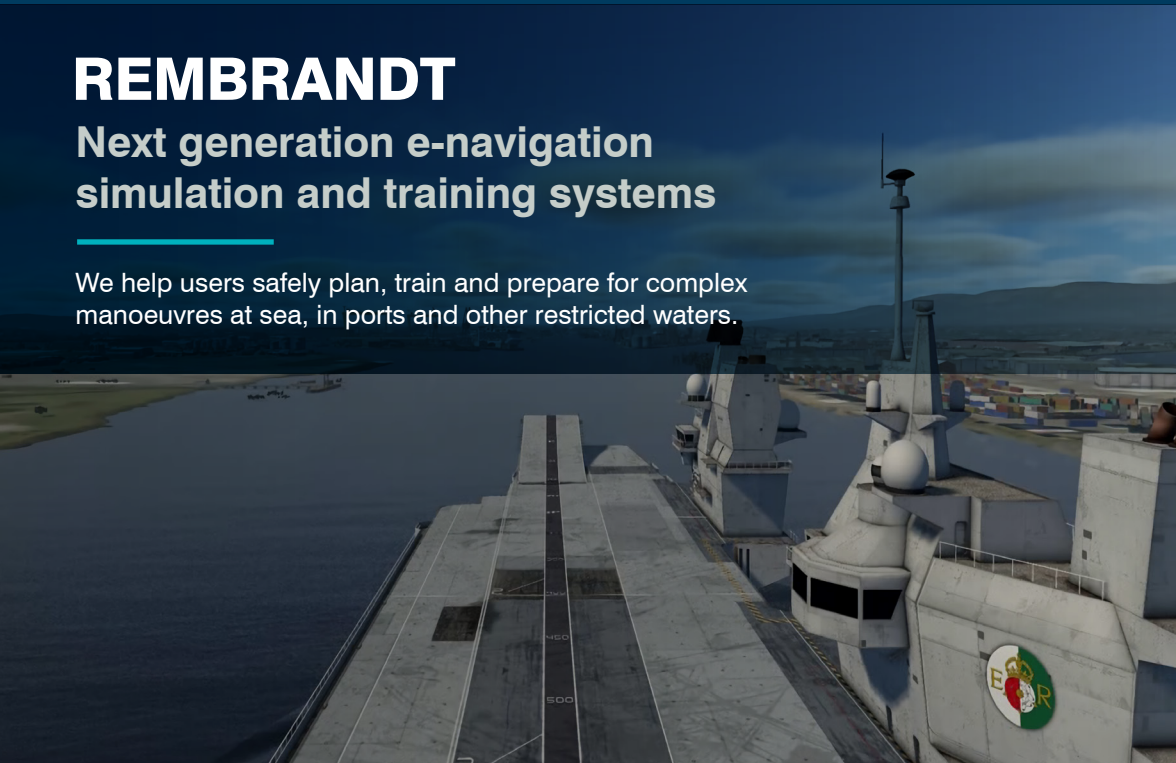




REMBRANDT

Next generation e-navigation simulation and training systems

We help users safely plan, train and prepare for complex manoeuvres at sea, in ports and other restricted waters.



Benefits



Scalable and portable navigation simulator systems providing ultimate flexibility for shore and ship-based deployment



Exploiting our rich heritage in ship model testing and hydrodynamics



Fully DnV accredited suite of simulator platforms



Automatically reads VDR and AIS to deliver a high-fidelity, 3-D reconstruction and playback



Rapid port construction modelling using LIDAR technology



Next generation S-100 ENC data platforms enables precision e-navigation, under keel clearance management and training

Scalable range of ship simulators

BMT's suite of REMBRANDT systems range from DnV Class A, B, C fully accredited full mission bridge simulators through to DnV Class S highly portable desktop and laptop platforms suitable for both office and shipboard use.



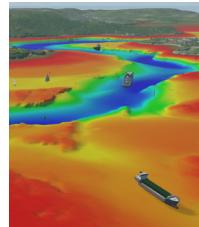
Digital forensics

REMBRANDT has been developed over 30 years, working extensively with commercial ship operators, ports, terminal operators, pilots and statutory accident investigation bodies. Working in close collaboration with the US NTSB, UK MAIB and ATSB, REMBRANDT enables rapid 3D VDR and AIS data visual reconstruction and playback. Added to this functionality, is a unique capability to implement "pause & take control", switching from a passive reconstruction to a fully interactive simulation. This permits "what-if" scenarios as an integral part of implementing a Lessons Learned culture.



Next-generation S-100 ENC platform enabled

The new International Hydrographic Office S-100 marine data framework includes provision of ultra-high density dynamic data and associated ENC configurations. REMBRANDT has been upgraded to include both S-57.S-63 and S-100 datasets, including bathymetry, dynamic water levels and surface and dynamic currents. This allows precision e-navigation and under keel clearance management.



Get in touch:
Phil Thompson or Mark Wilson
rembrandt@bmtglobal.com



@BMT_Global



BMTGlobal



BMT



bmt.org/rembrandt/

Find out more

